



Flight Plan & Site Survey

Created using **RPAS Wilco**[®]

Operation Name:	C2VM - site 4
Pilot Name:	[REDACTED]
Pilot Certificate:	[REDACTED]
Flight Start:	April 8, 2023 8:20 PM
Flight End:	April 8, 2023 10:20 PM
Flight Area (Latitude):	45° 36' 56.00" N (45.616)
Flight Area (Longitude):	73° 19' 12.30" W (-73.32)
Altitude - Radius:	Alt: 600 ft - Rad: 300 m (0.16 nm)
Airspace:	UNCONTROLLED
FIR - Contact:	CZUL - 506-867-7173

Please ensure you received all required authorizations prior to flight.

Disclaimer

This Site Survey was created using RPAS Wilco by AIM Robotics. The flight plan contained is intended only for RPAS flights on the date/time and location specified. The user accepts all responsibility for the accuracy and completeness of the information contained.

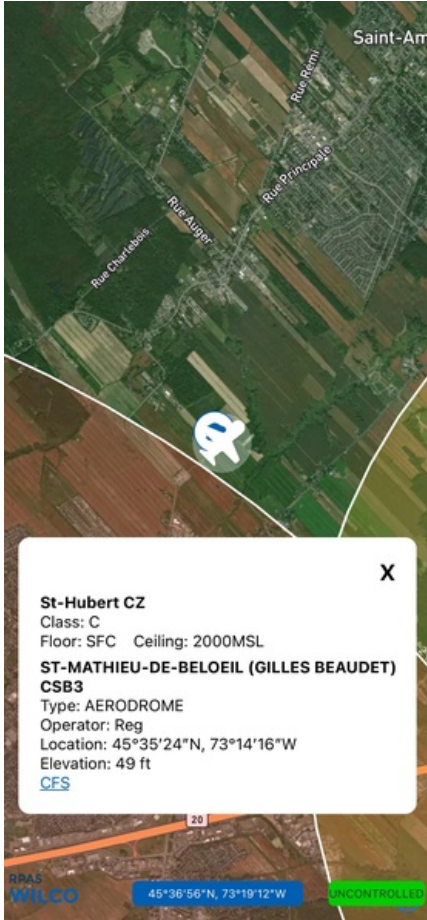
For the complete Terms & Conditions, see

<https://rpswilco.com/#/tnc>



Included

- Site Survey
- Obstacles (if available)
- Nearby Aerodromes
- Canadian Aviation Regulations
- GFA
- Aerodrome Supplements
 - METAR & TAF (if available)
 - NOTAMS
 - CFS

Flight Map

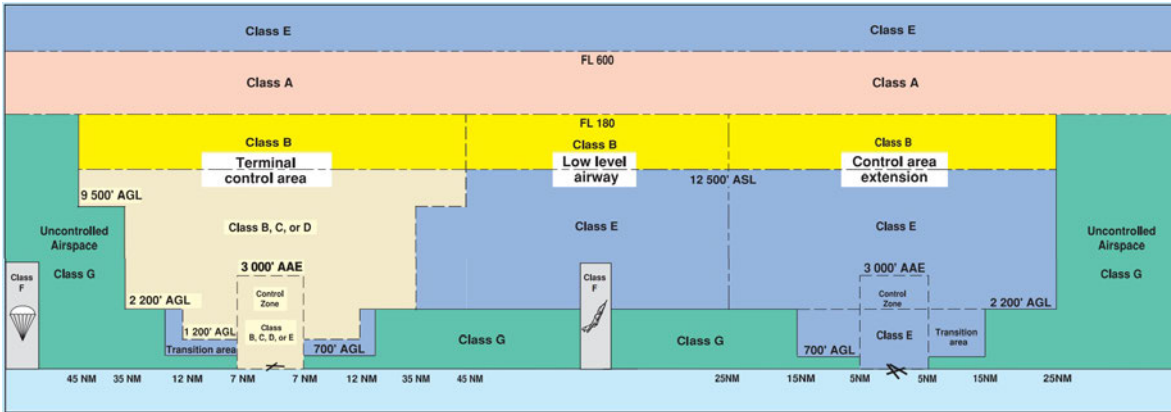


MAP Details

	Latitude	Longitude
 MODEL	45° 36' 56.00" N (45.616)	73° 19' 12.30" W (-73.32)
 Pilot	45° 36' 59.60" N (45.6166)	73° 19' 15.90" W (-73.3211)



Airspace Classification



Overlying Airspaces

Class	Name	Floor	Ceiling
E	Montreal FIR CAE	2000MSL	12500MSL
B	Montreal FIR CAE	12500MSL	18000MSL
C	Montral, QC TCA XPNDR MANDTRY	3000MSL	5000MSL
C	Montral, QC TCA XPNDR MANDTRY	5000MSL	12500MSL
C	Montral, QC TCA XPNDR MANDTRY	2000MSL	3000MSL
B	T662 Airway	12500MSL	18000MSL
E	T662 Airway	2200AGL	12500MSL
B	T616 Airway	12500MSL	18000MSL
E	T614 Airway	2200AGL	12500MSL
B	T614 Airway	12500MSL	18000MSL
E	T616 Airway	2200AGL	12500MSL
E	T677 Airway	2200AGL	12500MSL
B	T677 Airway	12500MSL	18000MSL
E	St Jean, QC TA	700AGL	12500MSL
B	St Jean, QC TA	12500MSL	18000MSL
E	Montreal FIR CAE	6000MSL	12500MSL
B	Montreal FIR CAE	12500MSL	18000MSL

Nearest Aerodromes & Distance from Operation

Aerodrome Name	Type	Reg	Lat	Long	Distance (KM)	Distance (NM)
ST MATHIEU DE BELOEIL (GILLES BEAUDET)	AERODROME	Reg	45.59	73.238	6.989	3.77
ST HUBERT (CYHU)	AERODROME	Cert	45.518	73.417	13.213	7.13
ST MATHIAS (CSV9)	WATERDROME	Reg	45.503	73.252	13.592	7.34
ST MATHIAS (CSP5)	AERODROME	Reg	45.501	73.242	14.114	7.62

Canadian Aviation Regulations

Division III — General Operating and Flight Rules

For full listing please visit <https://laws-lois.justice.gc.ca/eng/regulations/SOR-96-433/FullText.html#s-901.27>

Visual Line-of-sight

- **901.11 (1)** Subject to subsection (2) no pilot shall operate a remotely piloted aircraft system unless the pilot or a visual observer has the aircraft in visual line-of-sight at all times during flight.
- **(2)** A pilot may operate a remotely piloted aircraft system without the pilot or a visual observer having the aircraft in visual line-of-sight if the operation is conducted in accordance with a special flight operations certificate — RPAS issued under section 903.03.

Procedures

- **901.23 (1)** No pilot shall operate a remotely piloted aircraft system unless the following procedures are established:
 - **(a)** normal operating procedures, including pre-flight, take-off, launch, approach, landing and recovery procedures; and
 - **(b)** emergency procedures, including with respect to
 - **(i)** a control station failure,
 - **(ii)** an equipment failure,
 - **(iii)** a failure of the remotely piloted aircraft,
 - **(iv)** a loss of the command and control link,
 - **(v)** a fly-away, and
 - **(vi)** flight termination.
- **(2)** If the manufacturer of the remotely piloted aircraft system provides instructions with respect to the topics referred to in paragraphs (1)(a) and (b), the procedures established under subsection (1) shall reflect those instructions.
- **(3)** No pilot shall conduct the take-off or launch of a remotely piloted aircraft unless the procedures referred to in subsection (1) are reviewed before the flight by, and are immediately available to, each crew member.
- **(4)** No pilot shall operate a remotely piloted aircraft system unless the operation is conducted in accordance with the procedures referred to in subsection (1).

Site Survey

901.27 No pilot shall operate a remotely piloted aircraft system unless, before commencing operations, they determine that the site for take-off, launch, landing or recovery is suitable for the proposed operation by conducting a site survey that takes into account the following factors:

- **(a)** the boundaries of the area of operation;
- **(b)** the type of airspace and the applicable regulatory requirements;
- **(c)** the altitudes and routes to be used on the approach to and departure from the area of operation;
- **(d)** the proximity of manned aircraft operations;
- **(e)** the proximity of aerodromes, airports and heliports;
- **(f)** the location and height of obstacles, including wires, masts, buildings, cell phone towers and wind turbines;
- **(g)** the predominant weather and environmental conditions for the area of operation; and
- **(h)** the horizontal distances from persons not involved in the operation.

Operations at or in the Vicinity of an Aerodrome, Airport or Heliport

- **901.47 (1)** No pilot shall operate a remotely piloted aircraft at or near an aerodrome that is listed in the *Canada Flight Supplement* or the *Water Aerodrome Supplement* in a manner that could interfere with an aircraft operating in the established traffic pattern.
- **(2)** Subject to section 901.73 no pilot shall operate a remotely piloted aircraft at a distance of less than
 - **(a)** three nautical miles from the centre of an airport; and
 - **(b)** one nautical mile from the centre of a heliport.
- **(3)** No pilot shall operate a remotely piloted aircraft at a distance of less than three nautical miles from the centre of an aerodrome operated under the authority of the Minister of National Defence unless the operation is conducted in accordance with a special flight operations certificate — RPAS issued under section 903.03.

Records

- **901.48 (1)** Every owner of a remotely piloted aircraft system shall keep the following records:
 - **(a)** a record containing the names of the pilots and other crew members who are involved in each flight and, in respect of the system, the time of each flight or series of flights and
 - **(b)** a record containing the particulars of any mandatory action and any other maintenance action, modification or repair performed on the system, including
 - **(i)** the names of the persons who performed them,
 - **(ii)** the dates they were undertaken,
 - **(iii)** in the case of a modification, the manufacturer, model and a description of the part or equipment installed to modify the system, and
 - **(iv)** if applicable any instructions provided to complete the work.
- **(2)** Every owner of a remotely piloted aircraft system shall ensure that the records referred to in subsection (1) are made available to the Minister on request and are retained for a period of
 - **(a)** in the case of the records referred to in paragraph (1)(a), 12 months after the day on which they are created; and
 - **(b)** in the case of the records referred to in paragraph (1)(b), 24 months after the day on which they are created.
- **(3)** Every owner of a remotely piloted aircraft system who transfers ownership of the system to another person shall, at the time of transfer, also deliver to that person all of the records referred to in paragraph (1)(b).

QUEBEC

AERODROME/FACILITY DIRECTORY

ST-MATHIEU-DE-BELOEIL (GILLES BEAUDET) QC

CSB3

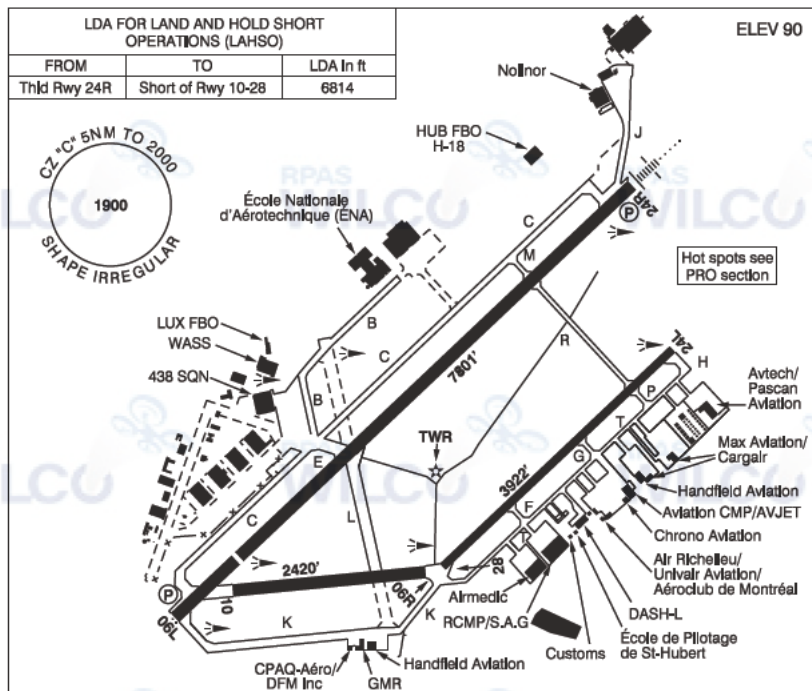
REF	N45 35 25 W73 14 17 1.5NW 15°W (2014) UTC-5(4) Elev 49' VTA A5002	
OPR	Corporation Aéroport SMB Inc 450-446-5931 Reg PPR	
PF	B-7,8 C-3,4,5	
FLT PLN	(bil)	
FIC	Québec 866-GOMÉTÉO or 866-WXBRIEF (Toll free within Canada) or 866-541-4105 (Toll free within Canada & USA)	
ACC	Montréal 514-633-3211 or 800-633-1353, all Flt Plns, IFR tng PPR. Flt Plns by Fax at 514-633-2877 & include phone numbers where pilot can be reached prior to dep. IFR clearance or activation 514-633-3014.	
SERVICES		
FUEL	100LL (Corp. Aéroport SMB. Members only.)	
OIL	All	
S	1,2,3,4,5	
PVT ADV	Aviamax 450-446-2570; Helico SB3 450-536-0880; Vortex Aviation 450-446-7400	
RWY DATA	Rwy 15(150°)/33(330°) 2581x50 ASPH Thld 15 displ 203' Thld 33 displ 178'	
RCR	Opr Ltd win maint	
LIGHTING	15-(TE ME), 33-(TE ME) ARCAL-122.7 type K	
COMM	(bil)	
ATF	122.7 5NM outside CYHU CZ 2000 ASL	
PRO	Circuits: All circuits not to exceed 1000 ASL. Touch/go for helicopters are not authorized on Rwy 15. Touch/go for all aircraft are not authorized between 03-13Z. Circuit Rwy 15: Extend downwind near the wooded area. Maintain 1000 ASL until turning final. Avoid over-flying built-up area below 1000 ASL on the downwind leg. Circuit Rwy 33: Climb on rwy centreline to 1000 ASL before turning for circuits or BPOC. Airspace: CYA 627(S) approx 12NM NE of A/D up to 3000 ASL, cont daylight. Training areas: See Montréal Terminal VTPC. Broadcast ground position and movement intentions.	
CAUTION	Twy B easily confused with Rwy 15/33. CYHU instrument apch: Act flying at Montréal/St-Hubert aprt (9NM WSW of Beloelil A/D Rwy 24R instrument apch may overfly Beloelil A/D at 2100 ASL.) Circuits: Rwy 15 tfc ptn, twr less than 1NM NE of A/D, 331 ASL. Rwy 33 tfc ptn, twr at 1NM SSW of A/D, 240 ASL.	

QUEBEC

AERODROME/FACILITY DIRECTORY

MONTRÉAL / ST-HUBERT QC

CYHU



REF	N45 31 05 W73 25 01 3E 15°W (2010) UTC-5(4) Elev 90' VTA A5002 LO6 LO7 LO8 HI5 T2 CAP
OPR	DASH-L 450-678-6030 Fax 450-462-0346 Cert Ldg fees
PF	B-1,2,3,6 C-4,5
CUST	AOE/15 888-226-7277 1330-0300Z± Mon-Fri exc hols
FLT PLN	(bil) FIG Québec 866-GOMÉTÉO or 866-WXBRIEF (Toll free within Canada) or 866-541-4105 (Toll free within Canada & USA) ACC Montréal 514-633-3211 or 800-633-1353. All Fit Plns, IFR tng flts PPR. Fit Plns by Fax at 514-633-2877 & include phone numbers where pilot can be reached prior to dep. WX METAR AUTO H24 (see COMM) TAF H24, issue times: 00, 06, 12, 18Z. WxCam

QUEBEC

AERODROME / FACILITY DIRECTORY

MONTRÉAL / ST-HUBERT QC (Cont'd)

CYHU

SERVICES

FUEL	100LL, JA-1 (FSII avbl), JP-4 F-34
OIL	All (Mil 123, 128, 133, 148, 156)
S	1 (ltd), 2,4,5,7
SUP FL	D & A-Ice, LHOX 13-21Z† Tue-Fri exc hols
JASU	Mil CE15, 16, CA2
MIL ADV	438 Sqn Ops - Call "438 Ops" 322.1 135.9 450-462-8777 Ext 7216 CSN 472-7216 13-21Z† Mon-Fri. Ltd trans svcg. 24 hrs PN.
PVT ADV	AvJet Distribution 123.025 450-678-4440; Pascan 131.17 888-313-8777, 450-443-0500; HUB FBO H-18 122.8 450-468-4400; LUX FBO 122.470 514-312-1885
MIL CON	Avjet Holding Inc 450-678-4440

RWY DATA

Rwy 06L(062°)/24R(242°) 7801x150 ASPH Thld 06L displ 1105'.
Rwy 06R(062°)/24L(242°) 3922x100 ASPH
Rwy 10(100°)/28(280°) 2420x150 ASPH

RWY CERT

Rwy 06L/24R AGN IIIB
Rwy 06R/24L AGN IIIA
Rwy 10/28 AGN II

TWY CERT

Twy L AGN II
Twy: C, E, F, G, H, M, P, R, T AGN IIIA
Twy K AGN I

RCR

Opr 1200-2030Z† Apr 01-Nov 30, 0330-2030Z† Mon-Fri O/T 3 hrs PN
Dec 1-Mar 31. Rwy 06R/24L clsd 0400-1045Z† Mon-Fri, 0100-1045Z† Sat-Sun Dec-
Mar; avbl as twy btwn Twy P and Twy R. Rwy 10/28 clsd 0400-1045Z† Mon-Fri,
0100-1045Z† Sat-Sun Dec-Mar. Hydroplaning may occur on Rwy 06L/24R
(especially at inbtx of twy L) dur heavy precipitation. CRFI, PLR/PCN
S50, T75, ST140, TT198.

MIL

LIGHTING

06R-(TE ME), 24L-(TE ME), 06L-AS(TE HI) P2, 24R-AN(TE HI) P2,
10-(TE HI), 28-(TE HI) ARCAL-118.4 type K for Rwy 06L/24R, PAPI & twy lgt B, C,
E, J, K, M, P, R, T

COMM

RCO	(bil) Rouyn rdo 118.4 (RAAS) 0500-1045Z† Tue-Sat, 0300-1045Z† Sun-Mon Apr-Oct; 0400-1045Z† Tue-Sat, 0100-1045Z† Sun-Mon Nov-Mar
ATIS	(English) 124.9 (French) 124.1 1045-0500Z† Mon-Fri, 1045-0300Z† Sat-Sun Apr-Oct; 1045-0400Z† Mon-Fri, 1045-0100Z† Sat-Sun Nov-Mar
GND	St-Hubert 126.4 1045-0500Z† Mon-Fri, 1045-0300Z† Sat-Sun Apr-Oct; 1045-0400Z† Mon-Fri, 1045-0100Z† Sat-Sun Nov-Mar
TWR	St-Hubert 118.4 (VFR ARR North) 121.3 (VFR ARR South and East) (V) 1045-0500Z† Mon-Fri, 1045-0300Z† Sat-Sun Apr-Oct; 1045-0400Z† Mon-Fri, 1045-0100Z† Sat-Sun Nov-Mar (emerg only 450-926-6458)
MF	Rouyn rdo 118.4 0500-1045Z† Tue-Sat, 0300-1045Z† Sun-Mon Apr-Oct; 0400-1045Z† Tue-Sat, 0100-1045Z† Sun-Mon Nov-Mar 5NM shape irregular 2000 ASL (CAR 602.98)
ARR	Montréal 125.15 268.3
DEP	Montréal 125.15 268.3
VFR ADV	Montreal Tml 134.15
MIL	438 Sqn Ops 135.9 322.1
AWOS	124.9 (English) 124.1 (French) 0500-1045Z† Tue-Sat, 0300-1045Z† Sun-Mon Apr-Oct; 0400-1045Z† Tue-Sat, 0100-1045Z† Sun-Mon Nov-Mar

NAV

NDB	HAUTS-BOIS ZHU 407 (L) N45 33 51 W73 20 49
DME	IHU 111.1 Ch 48 N45 31 21 W73 24 30 (113')
ILS	IHU 111.1 (Rwy 24R) RVR LOC reliable only within 10° either side of centreline

QUEBEC

AERODROME/FACILITY DIRECTORY

MONTRÉAL / ST-HUBERT QC (Cont'd)

CYHU

PRO

Pilots should refer to Canadian Airport Charts (CAC) to obtain details on established hot spots, prior to operating on maneuvering areas. CAC are available for free on the NAV CANADA website.

Circuits: Rgt hand circuits Rwy 06R, 24R & 28 (CAR 602.96).

Preferential rwy: Btwn 04-12Z†, all acft shall, when aprt and wx conditions permitting, land on Rwy 24R and take-off Rwy 06L.

Departure: 24L rstd to single engine acft having a GTOW of less than 5000 lbs. Rwy 24L and 24R climb rwy hdg to 1100 ASL BPOC or in the circuit.

All VFR acft leaving the CZ, climb to not above 1100 ASL or as assigned by ATC.

VFR Codes: Refer to MONTRÉAL VTPC section VFR FLIGHTS IN MONTRÉAL/TRUDEAU, MONTRÉAL/ST-HUBERT, MONTRÉAL/MIRABEL AND MONTRÉAL TERMINAL CLASS C AIRSPACE.

VFR acft towards Montréal/Trudeau: Outside TWR oprg hours, VFR acft proceeding towards Montreal CZ are required to proceed via Lafontaine Tunnel at 2000 ASL or lower if necessary due wx.

Mil ramp: PPR 48 hrs 438 Sqn Ops CSN 472-7216.

Airspace: Standardized use of common freq 122.1 (north) and 122.575 (south) in Class G airspace around the CZ. CYA 627(S) aprx 20NM NE of aprt up to 3000 ASL cont daylight.

Training: VFR circuits PPR 1-800-633-1353

Training areas: See Montréal Terminal VTPC.

MONTRÉAL/ST-HUBERT CZ AIRSPACE SPLIT FOR VFR FLIGHTS

During the hours of operation of the control tower, CYHU CZ is divided into two sectors for VFR arrivals with separate frequencies:

- All VFR arrivals from VARENNE QUARRY ctc St-Hubert TWR on 118.4 (ARR VFR North).

- All VFR arrivals from CHAMBLY and ST-PHILIPPE ctc St-Hubert TWR on 121.3 (ARR VFR South and East).

VFR ARR/DEP ROUTES

All VFR aircraft should follow arrival and departure routes, unless otherwise specified by ATC.

See "VFR TERMINAL PROCEDURES CHART - ARR/DEP" for additional details.

RWY 06L/24R AND TWY CHARLIE RESTRICTIONS

When ceiling is reported at less than 500' AGL, the following restrictions apply outside of tower hours of operation:

Arr: No acft should be on twy C when an acft is established on final apch for rwy 06L/24R.

Dep: No acft should be on twy C when an acft is ready for tkof.

CIV HELI Ctc Gnd 126.4 prior to dep. Dep & arr req Marina, Tunnel, North or Tower rtes or as cleared by ATC. See HELI VTPC for rtes & alts.

MIL HELI Ctc Gnd 126.4 prior to dep. Holding bay Rwy 06L designated as ldg/tkof pad. See HELI VTPC or rtes & alts.

NOISE **Touch and go:** Pursuant to CAR 602.105, the following noise control requirements apply at Montreal/St-Hubert airport. Rwy 24L & 24R not auth Oct 1-Apr 30 24-08 hr lcl Mon-Fri, 19-08 hr lcl Sat-Sun. Rwy 24L & 24R not auth May 1-Sep 30 23-08 hr lcl Mon-Fri, 15-08 hr lcl Sat, Nil Sun & hol(s).

Noise oprg restric ions & noise abatement procedures in effect. See CAP.

CAUTION

Blasting ops: 9.5NM NE.

Beloeil A/D: lctd 8NM NE of Rwy 24. (Circuits ht 1000 ASL).

Taxiway: Due to aprt layout twy "T" may be mistaken for Rwy 24L.

Firing range: lctd 4.9NM NE of Rwy 24.

Mil Ramp: Large mag anomaly in front of the 438 Sqn hg causing mag compasses to deviate as much as 90°.

CANADA WATER AERODROME SUPPLEMENT

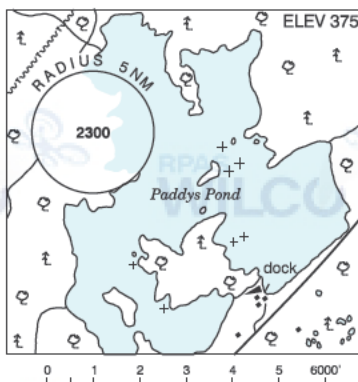
Effective 0901Z 24 March 2022 to 0901Z 20 April 2023

B196 AERODROME/FACILITY DIRECTORY

ST. JOHN'S (PADDYS POND) NL

CCQ5

REF	N47 28 W52 54 5SW 19°W (2013) UTC-3½(2½) Elev 375' A5012
OPR	Avalon Float Plane Association 709-364-2855/690-9486 Reg
PF	C-1,2,3 D-4,5,6
FLT PLN	
FIC	London 866-WXBRIEF (Toll free within Canada) or 866-541-4104 (Toll free within Canada & USA)
ACC	(IFR only) Gander 709-651-5225 or 888-751-5225.
SERVICES	
FUEL	100LL PN 1day
S	5

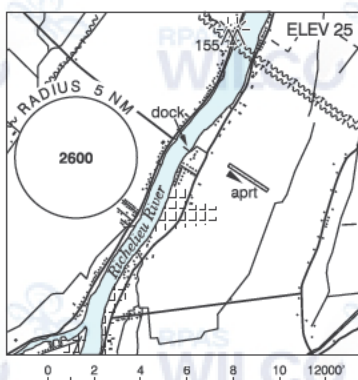


A/D DATA	Open water May-Nov. Ramps & moorings.
COMM	
RCO	London rdo 123.275 (FISE) 126.7 (bcst)
ATF	tfc 123.2 5NM 3400 ASL excluding St. John's Intl CZ
NAV	
VOR/DME	TORBAY YYT 113.5 Ch 82 N47 29 07 W52 51 08 (839')
PRO	Bcst/monitor 123.2 when taxiing.
CAUTION	Strong easterly winds in main pond area. Many shoal areas.

ST-MATHIAS QC

CSV9

REF	N45 30 10 W73 15 08 1N 15°W (2014) UTC-5(4) Elev 25' VTA A5002
OPR	Avn B.L. Inc 450-658-2041 Fax 450-658-3982 Reg
PF	B-1 13-22Z† C-2,3,4,5,6 at adj land A/D
FLT PLN	
FIC	(bil) Québec 866-GOMÉTÉO or 866-WXBRIEF (Toll free within Canada) or 866-541-4105 (Toll free within Canada & USA)
SERVICES	
FUEL	100LL
OIL	W100, 15W50, 20W50, 25W60
S	1,2,3,4,5



A/D DATA	Open water mid Apr-Nov. Depth 4', mud bottom. Asphalt ramps.
COMM	
ATF	tfc 123.2 5NM below 2000 ASL outside CYHU CZ
PRO	Training Areas: See Montréal Terminal VTFC.
CAUTION	P-lines 155 AGL 0.75NM NE of dock.

CANADA WATER AERODROME SUPPLEMENT

Effective 0901Z 24 March 2022 to 0901Z 20 April 2023

AERODROME/FACILITY DIRECTORY B197

ST-MICHEL-DES-SAINTS / LAC KAIAGAMAC QC

CLK4

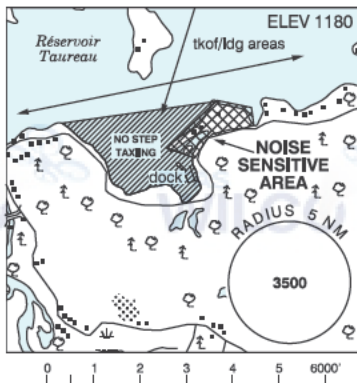
REF	N46 39 04 W73 53 39 1.7SSE 15°W (2016) UTC-5(4) Elev 1190' A5002
OPR	Rock Martel 514-473-3005 Fax 450-581-5404 Reg PPR
PF	C-1,2,3,4,5
FLT PLN	(bil) FIG Québec 866-GOMÉTÉO or 866-WXBRIEF (Toll free within Canada) or 866-541-4105 (Toll free within Canada & USA)
SERVICES	S 1,4,5
A/D DATA	Open water May-Oct. Mud bottom.
COMM	ATF tfc 123.2 5NM 4200 ASL
CAUTION	Land A/D 4.5NM NW and water A/D 2.3NM N. Common freq.



ST-MICHEL-DES-SAINTS (MARINA LE NAUTIQUE) QC

CMS3

REF	N46 41 24 W73 53 55 3W 15°W (2014) UTC-5(4) Elev 1180' A5002
OPR	Marina Le Nautique 514-984-2833 Reg
PF	C-1,2,3,4,5,6
FLT PLN	(bil) FIG Québec 866-GOMÉTÉO or 866-WXBRIEF (Toll free within Canada) or 866-541-4105 (Toll free within Canada & USA)
SERVICES	PN mid-May to mid-Oct Opr FUEL 100LL OIL All S 4,5,6
A/D DATA	Open water May-Nov. Sand bottom. Dock depth 20'.
COMM	ATF tfc 123.2 5NM 4200 ASL
CAUTION	Land A/D 4NM W. Common freq. Lgtd antennas 1NM S of A/D.



QUEBEC

AERODROME/FACILITY DIRECTORY

ST-MATHIAS QC

CSP5

REF	N45 30 03 W73 14 30 1.7NE 15°W (2014) UTC-5(4) Elev 50' VTA A5002
OPR	Aviation B. L. Inc 450-658-2041 Reg
PF	A-1 13-22Z† C-2,3,4,5,6
FLT PLN	(bil)
FIC	Québec 866-GOMÉTÉO or 866-WXBRIEF (Toll free within Canada) or 866-541-4105 (Toll free within Canada & USA)
SERVICES	
FUEL	100LL
OIL	All
S	1,2,3,4,5,6
RWY DATA	Rwy 14/32 2000x50 GRVL/GRASS
RCR	Opr 13-22Z†
COMM	
ATF	tfc 123.2 5NM outside CYHU CZ 2000 ASL
PRO	Training areas: See Montréal Terminal VTPC.

